



LEICESTER
GRAMMAR
SCHOOL
SIXTH FORM

ASPIRE



WELCOME TO THE SIXTH FORM AT LEICESTER GRAMMAR SCHOOL.

Sixth Form is a hugely exciting time in your life.

At LGS, it marks a clear shift: greater independence, increased responsibility and the opportunity to shape your own unique path. You are trusted to manage your time, make choices and express who you are becoming. Whether working in our Sixth Form study centre, with friends in the dedicated common room, or relaxing in the café, you have the space to take ownership of each day.

At the heart of Sixth Form is a focus on learning and discovery. This is a time to develop your interests and immerse yourself in the subjects that you really enjoy, supported by teachers who are experts in their fields and have the time to guide, challenge and inspire you. It is also a time for looking ahead. Whether your ambitions lie in university study, a competitive degree apprenticeship or overseas study, our dedicated Sixth Form team is here to provide individual guidance so you can plan your next steps with confidence.

Alongside this academic focus comes the opportunity to contribute and lead. As a Sixth Form student, you play an important role in the life of the school – leading younger pupils in sport, music or drama, becoming a student support ambassador,

running clubs or societies, or taking on the roles of prefect or house captain. These experiences are a key part of what makes being in a school environment for Sixth Form so rewarding, helping you develop confidence, skills and a sense of responsibility to others.

We are enormously proud of our Sixth Form students – of what they achieve in their studies and beyond the classroom, of the leadership they show and the contribution they make to our community, and of the young adults they become. They leave us confident, well informed and compassionate, ready to move forward with purpose and make a positive difference in the world.

Magnus Anderson
Head, Leicester Grammar School

ASPIRE: YOUR UNIQUE SIXTH FORM EXPERIENCE

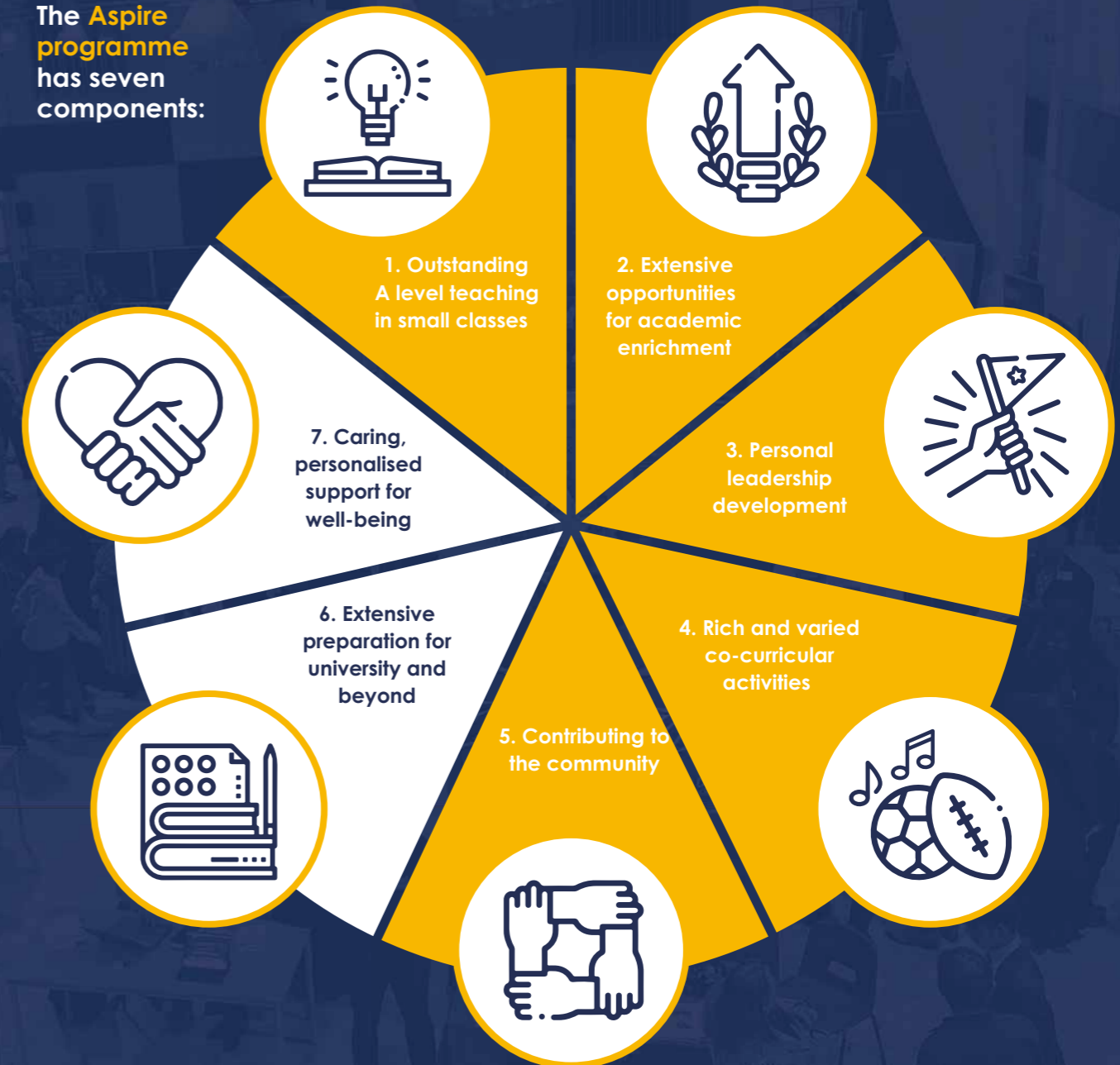
At LGS, all sixth form students benefit from our unique Aspire programme.

With a perfect blend of academic challenge, leadership development and co-curricular opportunities, we believe Aspire offers one of the best sixth form experiences available in the UK.

Over the two years, students who engage fully in the programme achieve even more than they would have believed possible, developing an understanding of themselves and the world around them whilst opening doors for the next step in their education.

“OUR SIXTH FORM IS A POSITIVE, FRIENDLY AND SUPPORTIVE PLACE TO BE. OUR STUDENTS ARE GIVEN THE OPPORTUNITY TO THRIVE AND TO BE THE BEST VERSION OF THEMSELVES THEY CAN BE.”

The **Aspire programme** has seven components:





YOUR A LEVEL STUDIES

A levels feel very different from GCSEs. They are an opportunity to study the subjects you love in greater depth.

You will have chosen your subjects because you enjoy them, and your teachers will treat you like the young adult that you are, with the privileges and responsibility that entails.

While the same values and high standards run all the way through LGS, the sixth form experience is quite different from that in the lower school. Students enjoy a greater freedom to choose how they dress and have their own rooms for both study and leisure. Starting sixth form is also a great time to make new friends, with many young people joining us from other schools.

Outstanding Teaching in Small Classes

At LGS, we give you the time to explore your subjects fully, with guidance from expert teachers who are passionate about their subjects.

Our class sizes are small, with no more than 16 students in any class. Most classes have around 12 students or fewer. This means that personalised guidance and support are always available, whether you are finding a new idea difficult, or want to extend your thinking beyond the syllabus.

We also offer ample private study time – some of it supervised – for background research, further problem solving and essay writing. Students are supported to immerse themselves in their subjects, attending exhibitions, concerts and plays, taking part in challenge events, or spending time abroad putting language skills to use.

Your A Level Choices

Most students choose three subjects for A level, as this is what most universities require. While it is possible to study four subjects – and usually essential for further mathematics – we only recommend this for the most academically engaged and industrious students.

Choosing your A levels is a personal decision, but we think a good starting point is to think about the subjects which:

- You are good at.
- You are interested in.
- Contribute to your career aspirations.

As a LGS student, you will have a one-to-one discussion to help you make your A level choices, including whether to take three or four. If you are new to our school, this conversation will take place during your sixth form taster day.

Full details of the A-level course we offer are available on our website www.lgs-senior.org.uk/a-level-subjects. We suggest you look through this information and take time to reflect on what interests you, what you enjoy and what you may want to do after sixth form. If you feel excited about the prospect of two years' learning in these subjects, you are probably thinking along the right lines.

“THE THING I ENJOY MOST ABOUT BEING IN SIXTH FORM IS THE FREEDOM – TO STUDY WHAT YOU ENJOY AND WORK IN THE WAY THAT SUITS YOU BEST.”

Our A Level Courses

We offer an extensive range of A level courses and aim to provide every subject listed here.

Art & Design¹	Economics²	Latin
Art: Ceramics¹	English	Mathematics
Biology	French	Music
Business²	Further Mathematics³	Physical Education
Chemistry	Geography	Physics
Classical Civilisation	German	Psychology
Computer Science	Greek	Religious Studies
Design & Technology	History	Spanish
Drama & Theatre		

¹ Art & Design and Art: Ceramics cannot be chosen together.

² Economics and Business cannot be chosen together.

³ Students taking Further Mathematics must also choose Mathematics and two other subjects.



ACADEMIC ENRICHMENT

At LGS we offer a range of opportunities to add variety to your studies and broaden your knowledge.

Short Courses

In Year 12, you can choose from a wide variety of short courses to study as part of your timetable. Each short course runs for a term. This year's courses have included:

- Free Will and Determinism
- Greenpower - design, build and race an electric car
- Preparation for Medicine - for aspiring doctors
- An Introduction to Feminism
- Economics of Wellbeing

Friday Lectures

The Year 12 timetable includes a weekly lecture from a guest speaker. Our guests include academics, politicians, representatives of charities and former students talking about their careers.

The lectures are an opportunity to look beyond our immediate community, to analyse and debate some of the key issues affecting society, and develop important skills for university and beyond.

Recent Friday lectures have included:

- Nelson Mandela's former bodyguard Chris Lubbe gave an illuminating talk about Mandela and apartheid in South Africa with personal insights into what the inspirational figure was like away from the spotlight.
- Emma Cole spoke movingly about her experience living with HIV. Her informative talk dealt with this sensitive subject in a very matter-of-fact yet humorous way.
- The Art of Public Speaking: An entertaining and practical coaching session on the importance of good communication from Simon Bucknall who won second place in the 2017 Vancouver World Championship of Public Speaking.

Extended Project Qualification

Students at LGS are encouraged to undertake an Extended Project Qualification (EPQ).

Well-regarded by universities, your EPQ will help you develop undergraduate-level research skills and tangible evidence of your passion for a subject area. When applying to university, your EPQ provides an area of expertise to write about and is likely to become a topic of conversation at any admissions interview.

An EPQ can be either a 5,000-word research report or an artefact accompanied by a shorter 1,000-word report. You will be supported every step of the way with dedicated lesson time with expert teachers built into your timetable. Initially these sessions will help you develop the necessary research skills. As your project develops, you can use this time to complete independent work and meet with your project supervisor to discuss progress.

Further Enrichment Opportunities

There are many other opportunities at LGS to expand your knowledge and prepare yourself for making university applications, including various clubs and societies that will help you broaden and challenge your understanding.

Clubs and societies at LGS include:

- Medical Society
- English Extension
- Physics and Engineering Extension
- Chemistry Challenge Club
- Business and Economics Society
- Journalism Clubs
- Debating.
- Change Group
- Anti-Bullying Committee
- FemSoc and Embrace

We actively encourage students to enter academic competitions outside of school and produce a regular **Enrich** newsletter listing the many external opportunities available.

Our students' recent successes include Year 13 students, Ali, Lucas and Aditya (Team Agripod) one of three runner-up teams from 1,150 schools in 116 countries in The Earth Prize 2023, an incredible six Arkwright Engineering Scholarship awards.



**“THE SHORT COURSES,
IVY HOUSE, AND FRIDAY
LECTURES HAVE WIDENED
MY THINKING BEYOND
MY A-LEVEL SUBJECTS.”**



PERSONAL LEADERSHIP DEVELOPMENT

We help you to develop the leadership qualities that will stand you in fine stead for university and the world of work.

Ivy House Award

At LGS, you'll have the opportunity to participate in the Ivy House Award for future leaders. Ivy House train executives from well-known companies including Marks & Spencer, Aviva, L'Oréal, NatWest and Transport for London. They have created a talent development scheme for young people and we are one of a very limited number of schools able to offer this scheme to our students.

The award is a two-part programme. The first part will support you to discover your unique character: who you are, what you want, and how you can play to your strengths. The second part will help you develop core skills, such as ownership, initiative, resilience and confidence, that are critical for success.

The award involves videos, quizzes, psychometric tools, bespoke exercises and discussion topics facilitated by teachers in a classroom setting. It bridges the gap between education and work, equipping you with the knowledge and ability to thrive, whatever your chosen path.

Leadership Opportunities

As a sixth former, you will be a natural leader for our younger pupils, setting the tone at the top of the school. Whether as a prefect, house captain or mentor, or by taking a guiding role in sport, music or drama, you will have a wealth of opportunities to develop valuable leadership and people skills for life.

Sixth formers play a leading role in organising and preparing teams in our house competitions, marshalling and preparing younger pupils. We have a vibrant competition programme throughout the year, including rugby, netball, singing, drama and general knowledge. If you enjoy these opportunities to lead, you can apply to become a house captain in Year 13.

We appoint our prefects at the end of Year 12. They work with the Heads of School and senior prefect team and include specialist prefects with roles in drama, music, charity and student support.

Prefects act as an important link between pupils in all year groups and the school leadership. The senior prefects meet with the Headmaster every two weeks to discuss their views and ideas. Prefects play a central role on formal occasions, in supporting new pupils in Years 6 and 7, and in carrying out duties during the school day.

“SIXTH FORM HAS DEVELOPED MY INDEPENDENCE AND HAS MADE ME A LOT BETTER AT ORGANISING MY TIME WHICH I KNOW WILL HELP ME IN LATER LIFE.”





CO-CURRICULAR ACTIVITIES

At LGS, sixth form life is about so much more than A levels. Here are some of the activities you can get involved in. See the co-curricular section of our website for more.

Sport

We love sport at LGS, whether for the simple pleasure of physical activity or for the challenge of performing at our best. We are surrounded by 75 acres of playing fields, boasting exceptional sports facilities inside and out, including a fully-equipped fitness suite and 25m swimming pool.

We dedicate a term each to hockey, netball and cricket (for girls) and rugby, hockey and cricket (for boys). We are also one of the top schools nationally for tennis, with an intensive programme running throughout the year.

We are proud of the national and international sporting stars we often have within our sixth form, from rugby, tennis, hockey and cricket. All competitive athletes have access to our gym and swimming pool, as well as individual guidance from our experienced staff. See our website for more details.

Duke of Edinburgh's Gold Award

The Duke of Edinburgh's Gold Award – the highest level in the scheme – is internationally recognised for the challenge it poses. It will give you skills, confidence and an edge over others when you apply for university or a job, while making a positive difference to the community.

You will have the opportunity to complete the award during Year 12, with weekly sessions to help you. You need not have completed the Bronze or Silver awards in order to start the Gold award.

Young Enterprise

Young Enterprise offers you the chance to experience running your own business with the support of advisers from local industry. The programme is highly valued by admissions tutors and future employers, developing entrepreneurship, team work, problem-solving and communication skills.

In recent years, LGS teams have made it to regional and national finals, winning an impressive range of prizes including most innovative product, best financial management, best marketing strategy, best report, and best trade stand.

Music

The Music Department boasts an impressive array of activities for sixth form students. In particular, the Chamber Choir, Big Band, Folk Group, Symphonic Wind Band and First Orchestra are geared towards our sixth formers.

We perform regularly inside and outside of school. The First Orchestra's annual production is often a highlight, as is the Big Band's trip to Leicester's Little Theatre. There are also opportunities for the most able students to perform a concerto with the Bardi Symphony Orchestra.

Drama

There are lots of opportunities for students interested in drama and theatre. If you like to perform, you can audition for the annual school production and take part in the biennial House Drama Competition, which is directed by students.

If you prefer, you can get involved backstage or front of house. Our technician runs a vibrant student technical team, responsible for the technical aspects of all examined performances and productions, as well as other school events.

You can also develop performance skills and theatrical knowledge by taking LAMDA lessons. These are taught before, during and after school by experienced professionals.

The Leicestrian School Magazine

Join the team of writers and editors who work to plan and produce the school magazine each year. Interview teachers and students, write and edit articles and work on the layout. Being a part of The Leicestrian team is a great way to learn about and contribute to every stage in the production of a professional publication.

“LGS HAS ALLOWED ME TO PURSUE MY PASSIONS – MUSIC, SPORT AND ART – WHILST TRYING NEW THINGS LIKE DEBATING AND GOLD DOFE.”





CONTRIBUTING TO THE COMMUNITY

As young adults, starting to forge their place in society, our students value the opportunity to 'give something back' and make a difference to the lives of others.

Charity Committee

Our busy sixth form Charity Committee identifies good causes and raises awareness and funds to support them. Members attend regular meetings to organise the committee's work and run events throughout the school year. From cake sales to discos, fun runs to balls, members of the Charity Committee make a big difference and the charities we help really value their support.

Community Service

We will support you to undertake a Community Service placement during sixth form if you wish. Recent placements have included a primary school, charity shop, hospital and animal rescue centre. Undertaking a placement is a great way to make a difference in the local community and develop your initiative and social awareness.

You'll be expected to find your own placement, but the school coordinator will confirm the arrangements, help you find the time, and maintain contact with your placement supervisor to check it is going well. You'll get a written reference at the end of your placement which your UCAS referee can refer to in university applications.

Mentor Training and Student Support Group

LGS offers mentor training for sixth formers who wish to join the Student Support Group. The eightweek course, led by a qualified counsellor, covers communication skills, body language and ethical issues.

The Student Support Group offers support and advice to pupils on both academic and personal issues. Once qualified as a mentor, you will be able to provide one-to-one support and work with small groups of younger pupils. Student Support Group members also oversee homework club, offer revision technique classes and supervise lunchtime clubs.

“I LOVE THE TIGHT-KNIT COMMUNITY WE HAVE AT LGS, WHILE ALSO BEING GRANTED THE FREEDOMS THAT COME WITH BEING PART OF THE SIXTH FORM. IT’S THE PERFECT BALANCE.”





PREPARING FOR UNIVERSITY AND BEYOND

Whatever your aspirations, we'll give you all the support you need to be confident in your next steps, to university or beyond.

University Applications

At LGS you'll get comprehensive support with your university applications to ensure the best prospects for success. We arrange visits from admissions tutors at Russell Group universities so you can understand exactly what they are looking for through the UCAS process.

You will also hear from former students who are now at university and get focused advice and guidance to produce the best possible personal statement.

If you are considering alternatives to university, you can also learn about other options, such as higher apprenticeships. We have an extensive careers programme, providing an insight into the world of work from local employers through to a 'Dragons Den' with the Leicester Education Business Company.

Support for Competitive Courses

If you are applying for the most competitive universities and courses, we offer tailored extra support with weekly sessions to help steer you through the process.

The Medical Society runs every week for students aspiring to study medicine, dentistry or veterinary medicine. We also offer an afternoon of mock multiple mini interviews (known as MMIs). These are run by our staff with input from practicing doctors, dentists and other medical professionals, and are the best preparation for medical school interviews.

Careers Support

Our friendly careers leader runs drop-in clinics four days a week, for students who have questions about university choices or future careers. You can book time with her for a one-to-one guidance meeting to think in detail about your options. She also produces a regular newsletter highlighting opportunities for work experience, university open days and apprenticeships.

We run a range of focussed careers events, including evenings for those considering careers in engineering and tech, the creative industries and for medics, dentists and vets. Every two years we have a major careers fair with over 80 exhibitors from local and national employers as well as select universities.

In Year 13 you will have opportunities for mock interviews to help prepare you for the interviews you will have when applying for jobs or further study.

“THE BEST THING IS THE SENSE OF INDEPENDENCE AND FREEDOM. THE RELATIONSHIP WITH TEACHERS IS MUCH MORE PERSONAL WHICH MAKES LESSONS MUCH MORE COLLABORATIVE.”





YOUR WELLBEING

Wellbeing

At LGS, your wellbeing is our priority. In 2022 we achieved the Wellbeing Award for Schools. This recognises our focus on wellbeing, where the student voice is developed through the school council, interest groups and active encouragement to speak to staff when help is needed. All our staff have undertaken mental health training so are well prepared to respond if you need their help.

Form Groups

Form groups are mixed across both Years 12 and 13. This means you can share knowledge and experience with others who are studying the same courses and pick up tips and advice about life in the sixth form.

Support if you need it

We know that the transition to sixth form can be challenging. Some students are surprised by the increase in the volume of work and the responsibility they experience at the start. It is natural to feel uncertain when so much is new, even for those who have been at LGS since they were small, and it can take time to adapt. Most students settle within a few weeks and quickly come to enjoy the different opportunities and atmosphere that sixth form life has to offer.

If you find need a little extra support, it is always available. You can meet with Rebecca, our Wellbeing Manager, to talk through any personal concerns and she is able to refer you to counsellors from RELATE for more complex issues. You meet with your form tutor every day and should quickly build a rapport, while the Heads of Sixth Form are also on hand to meet with you if required. Nurse Julia and the nursing team are in school every day to deal with illness or medical queries and are also a 'listening ear'.

From experience, we know that it's good to talk and share any worries at an early stage. We believe you become the best you can be when you are happy, healthy and enjoying school, so we encourage everyone to reach out to any member of staff if you need some support.

“I HAVE BEEN HERE SINCE YEAR 7 BUT HAVE MADE NEW FRIENDS IN SIXTH FORM – WITH NEW JOINERS AND WITH PEOPLE I’VE NOT INTERACTED WITH MUCH BEFORE.”





FREQUENTLY ASKED QUESTIONS

What grades do I need?

To study in our sixth form, we expect you to have achieved at least three GCSEs at Grade 7 and three at Grade 6 and to choose subjects that make sense in the light of your GCSE grades.

If you are already at LGS you will be assessed throughout Year 11 and we alert parents if we have concerns about a student's suitability for our sixth form.

If you are an external applicant you will visit for a taster day. This includes an interview with a senior member of staff. You are likely to receive an offer of a place if you have:

- A strong academic record and have – or are predicted to achieve – at least three GCSEs at Grade 7 and three at Grade 6.
- A genuine interest in your proposed A level subjects and good reasons for choosing them.
- A track record of engaging positively in activities beyond study such as music, drama, sport, Duke of Edinburgh, Scouts, National Citizen Service or part-time work.

What about special educational needs and disabilities?

Our learning development team support every student's best learning and health. We promote inclusive whole school approaches so that every student is able to achieve their best. These are provided through specialist teachers, the school nurses and teaching assistants.

Where needed, we offer:

- Support for identified groups of pupils, such as those with English as an additional language.
- Specialist teaching and coaching in small groups or one-to-one.
- In-house screening and assessment for specific needs and exam access arrangements.

What about Sport?

Sixth formers have one afternoon each week for Games. You may play one of our major sports which are hockey, tennis, athletics and cricket, plus netball for girls and rugby for boys. Our teams have a busy schedule of training and fixtures and we aim to put out at least a 1st and 2nd team for each of our major sports.

In Games, students can select an option each term from a range of activities including soccer, badminton, fitness suite, step aerobics, swimming, table tennis, ultimate frisbee and basketball. We also offer some sports off site, subject to student interest and staff availability.

What if I'm joining from another school?

A significant number of students join our sixth form from other schools and we make sure you'll find LGS a friendly and supportive environment. You will be offered two induction days, including orientation and teambuilding sessions, to ensure a smooth transition. You'll have regular 'check ins' with subject teachers, form tutors and the Heads of Sixth Form to ensure that everything is going well, and that you are happy and motivated in your new environment.

What about scholarships and bursaries?

We offer both scholarships and bursaries for sixth form students. Scholarships are awarded to recognise outstanding academic, musical, artistic or sporting talent and potential. They are typically worth 5-10% of the termly fee.

Bursaries are intended to support pupils who would not otherwise be able to afford to attend the school. They may be for any amount up to 100% of the termly fee, depending on parental income.

See our website for more details on scholarships and bursaries.

“IT FEELS SO DIFFERENT FROM YEAR 11. I GET TREATED LIKE AN ADULT AND HAVE A CHANCE TO EXPRESS MYSELF AND FOCUS ON THE THINGS THAT INTEREST ME MOST.”



FURTHER INFORMATION

Please go to each of the links below for the information you may require.

- Subject Specific Information
www.lgs-senior.org.uk/a-level-subjects
- Transport
www.lgs-senior.org.uk/bus-routes
- Scholarships and Bursaries
www.lgs-senior.org.uk/scholarships-and-bursaries
- Learning Development
www.lgs-senior.org.uk/learning-development
- Co-curricular
www.lgs-senior.org.uk/co-curricular
- Opportunities Beyond A levels
www.lgs-senior.org.uk/aspire-programme
- Academic Enrichment
www.lgs-senior.org.uk/enrichment





Leicester Grammar School, London Road,
Great Glen, Leicester, LE8 9FL

Tel +44 (0)116 259 1900

www.lgs-senior.org.uk

 /lgs_senior

 /leicester-grammar-school

 /leicestergrammarschool

